

Asian Breeze (55)

(亜細亜の風)

Merry Christmas to you all

18 December 2017

Dear Coordinators and Facilitators in Asia/Pacific region. I hope everyone is enjoying the joyous Christmas holiday seasons. Melody of Christmas songs is floating around every corner of town in Tokyo. Christmas illuminations were lit from the end of November. Tokyo is now wrapped up in the Christmas mood. People are buying Christmas presents and enjoying to appreciate the Christmas illuminations at night. One of the familiar sceneries of the season.

Nine years have passed since I started to issue Asian Breeze. Asian Breeze from (1) to (23) featured Asia/Pacific coordinators. Asian Breeze from (24) to (39) covered European Coordinators. Asian Breeze from (40) to (54) featured North/South American coordinators. Having finished covering all coordinators in the world, I will start again featuring Asia/Pacific coordinators.

Committed to continue issuing Asian Breeze, I would like to ask your continued support by proving me with your hot news. Please send me your contribution to asianbreeze@schedule-coordination.jp.



As a start of Asia/Pacific, I received a wonderful article from Mr. Donald Tan, a head coordinator of Changi Airport Group. It features newly opened Terminal 4, Jewel Changi Airport and Changi East Development as future development. Some pictures of Madrid and Asian Tea Gathering are also posted. I hope you will find them interesting.

Singapore Changi Airport (SIN)

Singapore Changi Airport (IATA: SIN, ICAO: WSSS), or simply Changi Airport, is the primary civilian airport for Singapore, and one of the largest transportation hubs in Southeast Asia. It is currently rated the World's Best Airport by Skytrax, for the fifth consecutive year (Skytrax's World's Best Airport 2013–2017) and is one of the world's busiest airports by international passenger and cargo traffic. The airport is located in Changi, at the eastern end of Singapore, approximately 17.2 km northeast from Marina Bay (Singapore's Downtown Core), on a 13-square-kilometre site. It is operated by Changi Airport Group and it is the home base of Singapore Airlines, Singapore Airlines Cargo, SilkAir, Scoot and Jetstar Asia Airways.

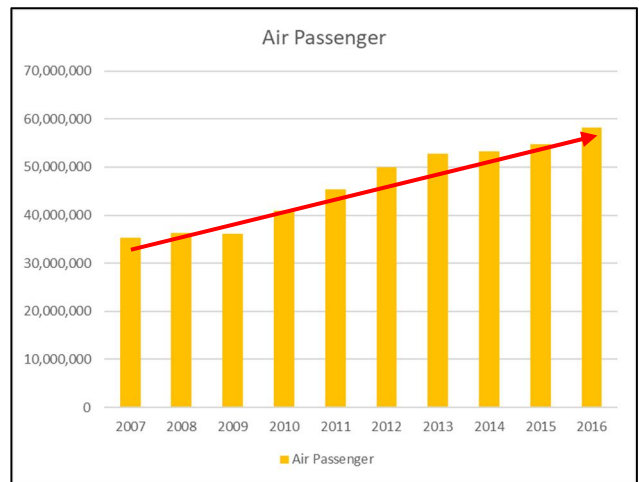
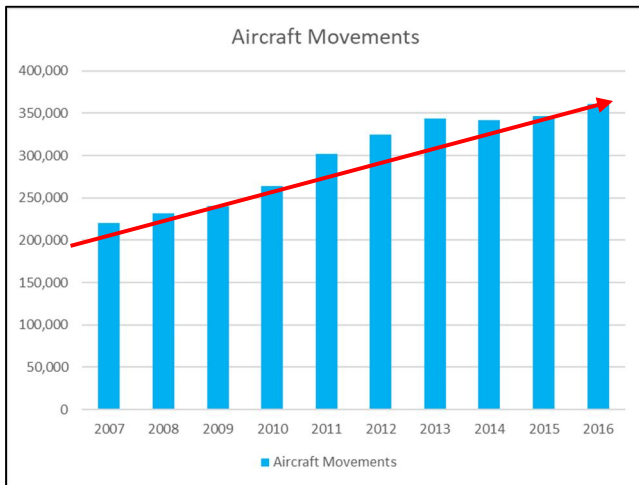
Air Transport Statistics

(1) Aircraft Movements

Year	2007	2008	2009	2010	2011	2012	2013	2014	2015	2016
Aircraft Movements	220,746	231,926	240,360	263,593	301,711	324,722	343,765	341,386	346,334	360,490

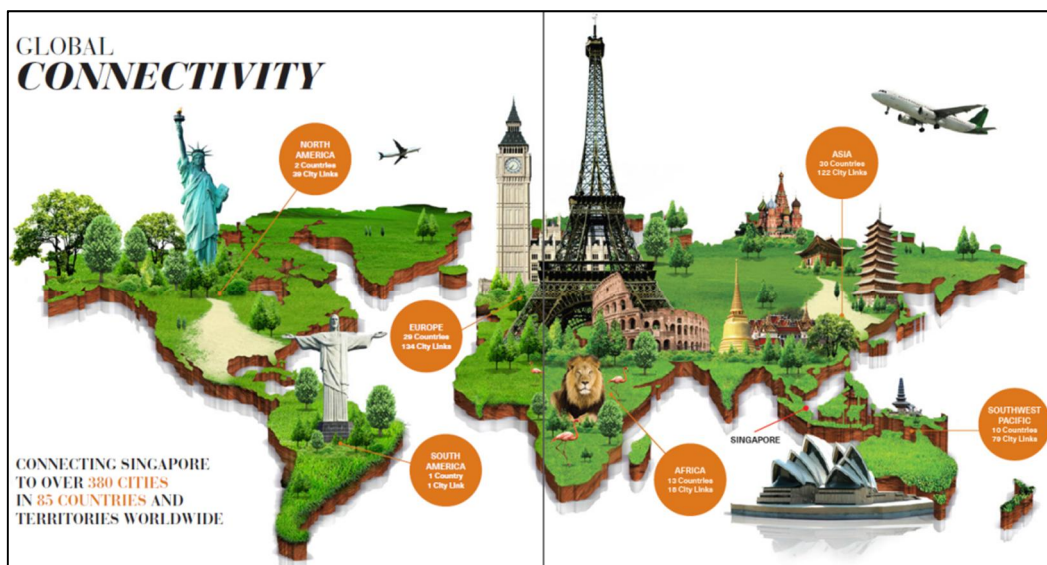
(2) Air Passengers

Year	2007	2008	2009	2010	2011	2012	2013	2014	2015	2016
Air Passenger	35,221,203	36,288,050	36,088,996	40,923,716	45,429,263	49,909,599	52,775,360	53,288,852	54,835,555	58,157,704

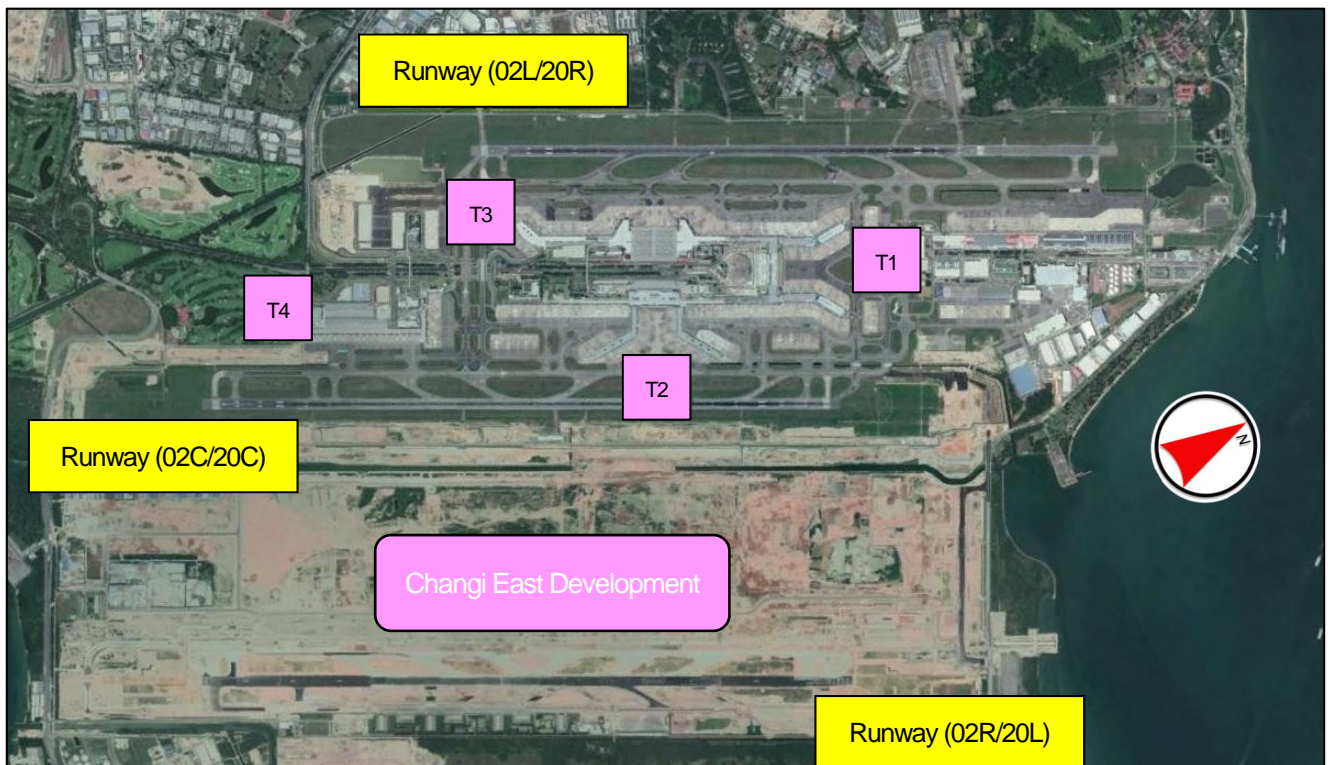


Air Transport Networks

Changi Airport serves more than 100 airlines flying to more than 380 cities in 85 countries and territories worldwide. Each week, about 7,000 flights land or depart from Changi, or, about one every 90 seconds.



Airport Infrastructure

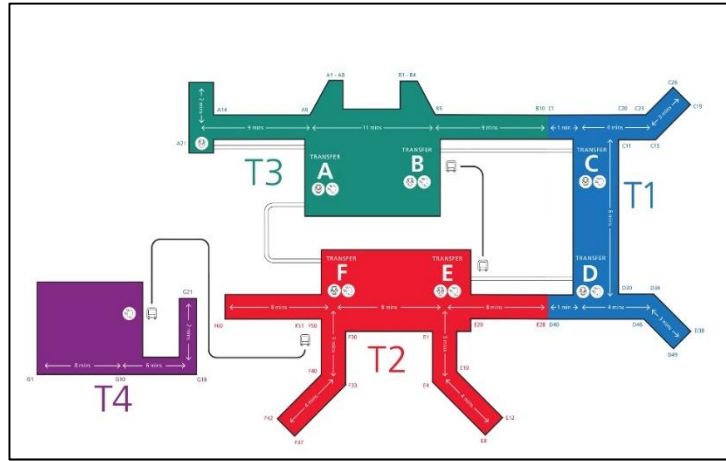


Changi Airport has two parallel runways, (02L/20R) and (02C/20C), each 4,000m by 60m. The runway (02L/20R) was completed and opened in 1981 as part of the airport's first phase. It has a displaced threshold of 740m leaving the rest of the runway at 3,260m long. The runway (02C/20C), formerly 02R/20L, was built completely on reclaimed land and opened with second phase, 1.6 km to the east of the runway (02L/20R). Four instrument landing systems (ILS) are installed on the two runways to guide landing aircraft safely under all weather conditions. Both runways are also used by the Republic of Singapore Air Force as part of Changi Airbase.

A new parallel runway (02R/20L) (named 01/19 when opened in 2004) was built 1.8 km to the east of the runway (02C/20C), currently used only by Republic of Singapore Air Force aircraft as part of Changi Airbase (East). This runway will be extended from 2,750m to 4,000m to handle passenger aircraft. Almost 40 km of new taxiways will also be built to connect the runway with the current airport. New facilities such as navigational aids, airfield lighting systems and a fire station will need to be built as well.

Passenger Terminals

Changi Airport has four main passenger terminals arranged in an elongated inverted 'U' shape. Currently, the airport has a designed total annual handling capacity of 82 million passengers.



Terminal 1

Terminal 1, opened in 1981, is located at the northern end. It has a total floor area of 308,000m², 31 aerobridges and a handling capacity of 21 million passengers/ year. Terminal 1 boasts a cactus garden and a swimming pool - facilities specially catered for passengers to unwind themselves just before their flights.

Terminal 1 serves 30 airlines, including Jetstar and Qantas, and is currently undergoing expansion and upgrading works to better serve both the airlines and passengers.



Terminal 2

Terminal 2, opened in 1990, is located to the eastern end. The floor area is 358,000m² and handling capacity is 23 million passengers/ year. There are 41 aerobridges and 17 airlines operate from the terminal, including Scoot and SilkAir.

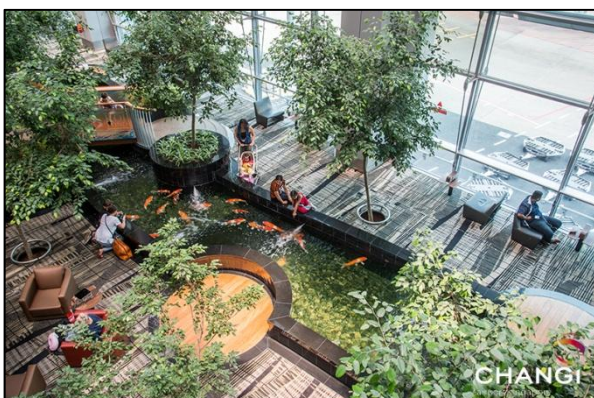
It has three themed gardens - a Sunflower Garden, an Orchid Garden and an Enchanted Garden - introducing lush greenery to the terminal.



Terminal 3

Terminal 3, opened in 2008, is located to the western end. The floor area is 380,000m² and the handling capacity is 22 million passengers/ year. There are 28 aerobridges.

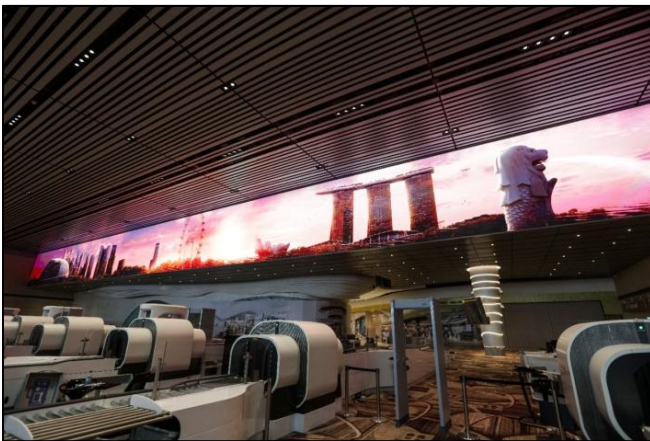
A total of 18 airlines operate at Terminal 3 including Singapore Airlines and Garuda Indonesia. Skylights are a main feature of the terminal and there are 919 panes across 66,000m² of roof space to let in the right amount of natural light. The terminal also has the world's tallest slide in an airport which stands at 12m.



Terminal 4

Terminal 4, opened on 31 October 2017, is located on the southern side of the airport at the site of the former Budget Terminal. The floor area is 195,000m² and handling capacity is 16 million passengers/ year. There are 21 aerobridges.

Currently, there are nine airlines operating out of Terminal 4, including AirAsia and Cathay Pacific.

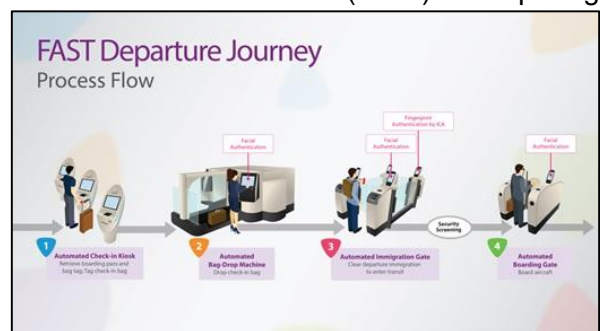


New Features of newly opened Terminal 4

Fast and Seamless Travel (FAST)

The terminal presents a new travel experience with its boutique design and innovative use of technology and will be the first terminal at Changi Airport to offer end-to-end Fast and Seamless Travel (FAST) for departing passengers.

With the extensive use of technology, including facial recognition software, FAST redefines the passenger travel experience, enhances operational efficiency and raises productivity. FAST will also yield productivity gains with manpower savings of about 20% expected in the longer term. Although just half the size of Terminal 3 (T3) in terms of floor area the planners and designers of T4 have managed to deliver a terminal that will have a capacity of 16 million passenger movements a year, two-thirds that of T3.



A unique and boutique design

T4's design theme is fun, vibrant and positively surprising. At the heart of T4 is a grand-scale kinetic sculpture, Petalclouds, which separates the public and transit areas. Visible from almost everywhere in the terminal,

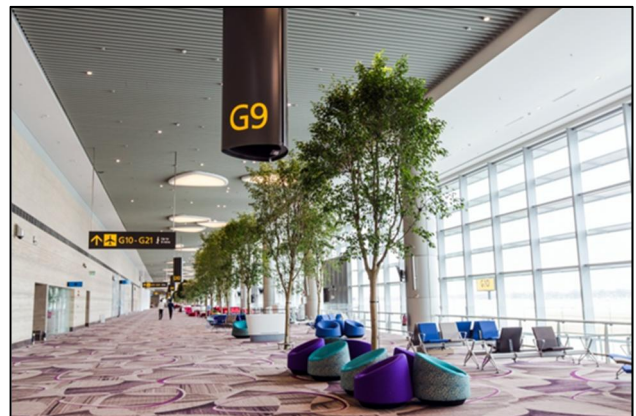
Petalclouds will leave one mesmerised as it moves gracefully to classical music specially composed by BAFTA award-winning composer, Ólafur Arnalds.

T4 also showcases Singapore's local culture and flavour to international passengers. The Heritage Zone in the transit area gives a glimpse into the evolution of shophouse architecture from the 1880s to the 1950s while housing local brands like Bee Cheng Hiang, Bengawan Solo, Curry Times, Eu Yan Sang, and Heavenly Wang.

With T4, the total handling capacity of Changi Airport will be raised from the current 66 million passengers per annum to 82 million, thereby providing all airlines operating at Changi with more room for growth.



Petalclouds that form a fascinating and continuous interplay of form, animated light and reflections. The Heritage Zone features the rich and colourful Peranakan heritage often seen in the likes of the Katong and Chinatown areas.



T4 departure hall and T4 boarding corridor.

Future Developments

Jewel Changi Airport



Target date of completion: Early 2019

What to look out for:

- Unique leisure attractions including a lush indoor garden with a central waterfall of about 40m in height
- A wide range of retail and dining offerings
- Facilities dedicated to fly-cruise and fly-coach passengers providing more options for seamless connectivity

(1) Canopy Park

Spanning about 14,000m², the Canopy Park which sits on the highest level of Jewel features exciting play attractions and serene gardens

(2) Forest Valley

The Forest Valley is a huge five-storey garden, housing one of the largest indoor collections of plants in Singapore. Immerse yourself in the beauty of nature within this idyllic valley of verdant landscaping and waterfalls! You can even take a casual hike up the valley, all in air-conditioned comfort.

(3) Rain Vortex

At 40m high, the Rain Vortex will be the world's tallest indoor waterfall, and is located right at the core of Jewel. Come night-time, the Rain Vortex will transform into an enchanting Light and Sound show - there is no better way to spend a perfect night out with family and friends.



Changi East Development

Target date of completion: Second-half of 2020s

What to look out for:

- New mega terminal and one of the world's largest, Terminal 5, with a planned capacity of 50 million passenger/ year, will be linked to Changi's existing terminals
- The implementation of a three-runway system to handle larger passenger aircraft, together with 40km of new taxiways that will connect Runway 3 to the current airfield

Introduction of our computer system

Changi Airport uses the SCORE system for managing slots coordination.



Information of our office

Organization	Changi Airport Group
Address	Changi Airport Terminal 2 #046-037, 60 Airport Boulevard, (S)819643
Email	csc@changiairport.com
Business Hours	8:30 – 18:00

Introduction of our members



From left to right: Victor, Anisah, Yi Kai, Donald, Caderina, Adeline, Ili

Good Memories of Madrid (SC141)



Asian Tea Gathering in Madrid





From Santa Clause (Chief Editor)



I would like to express my sincere appreciation to Mr. Donald Tan for his excellent contribution to Asian Breeze. I was so impressed to know that a third runway is already there and the construction of Terminal 5 is now in progress. What an ambitious plan for expansion! In addition, the construction of Jewel Changi is also in progress. It is like a Disney World. What a fantastic airport for amusement! Having finished this issue, I would like to rush with my wife to famous Christmas illumination places in Tokyo. I wish you a



Merry Christmas and a Happy New Year of 2018. (H.T.)



